

PLEASE READ

BEFORE MOUNTING!!

HOOD TO TRUCK

Thank you for purchasing a Jones Performance quality truck hood.
Please read the following information before installing your hood.

FIT BEFORE PAINTING

Hood Dismounting and Remounting

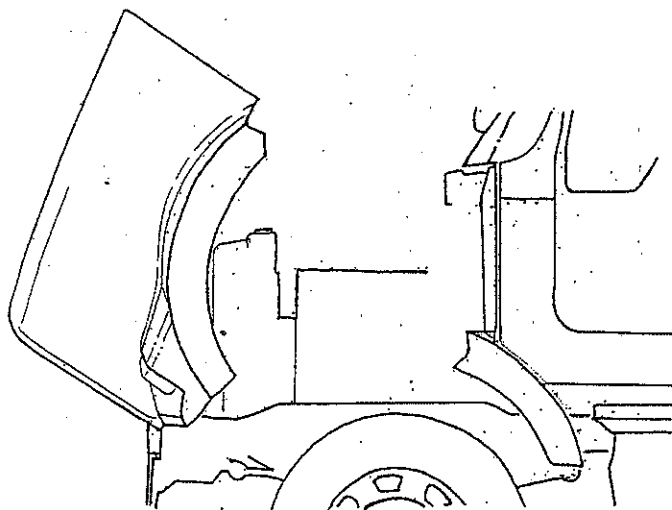
Dismount

Due to the preloaded hinge this hood can be difficult to remove and remount if not done properly. We have found it easiest to remove by opening hood and balancing (Note: do not fully open-see illus.1). Then remove the four bolts per side from the top hood pivot brackets (see illus.2) and carefully lift hood from truck. Remove hinge from hood and attach to your new JP hood. (See Hinge attachment)

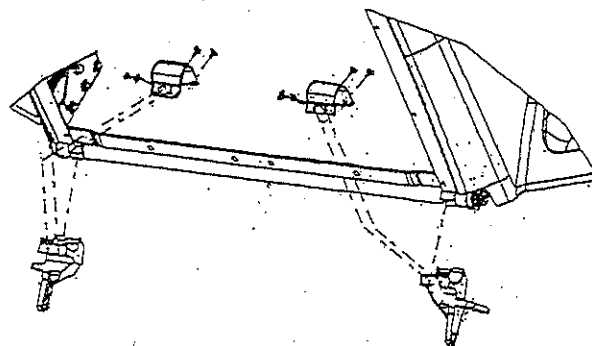
Remounting

Remount hood by lifting into place in the open position and reinstall the two top hood pivot brackets.

illus #1



illus #2

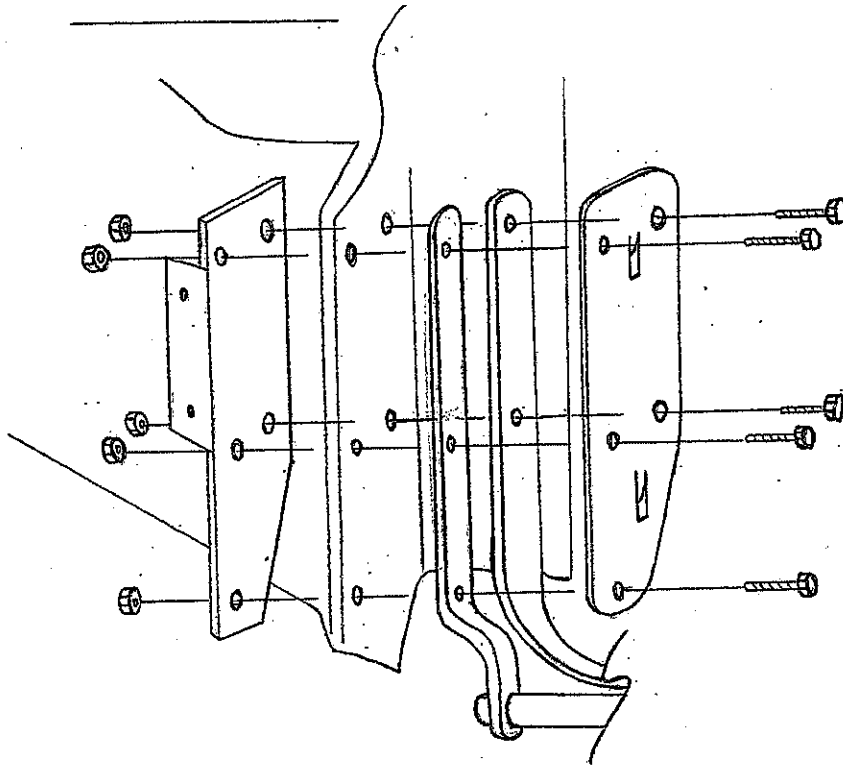


Hinge Attachment

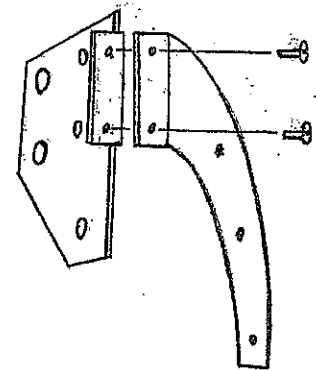
We have redesigned the hinge area for greater strength and durability. Included are all bolts and nuts needed to attach your JP hood to the OEM hinge bar. See illus.1 for correct assembly.

You will need to attach your OEM headlamp harness bracket to the JP hinge backing plate. See illus.2 for correct assembly.

illus #1



illus #2



Air Intake Cut Outs

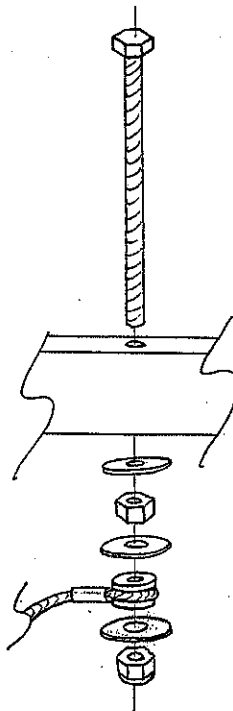
The air intakes have not been cut out due to some trucks have air intakes on either the driver side or the passenger side and some have them on both sides. We suggest taking a pattern from your original hood to cut out your air intake(s).

Rear Snubber Cup Assembly

Bolt the rear snubber cups to the rear brace with your OEM parts. Your OEM bolts will not work due to modifications we have made in this area for strength so we have included bolts and backing plates (the backing plates are for extra support).

Tilt Spring Assembly

Your JP hood is different in this area but similar in the way it attaches. See illustration below.



Under Hood Insulation

Your JP hood does not require under hood insulation. If you choose to install the OEM insulation kit, you will see that the JP innerstructure is different. Proper placement will be difficult.

Tie Downs

Due to variances we have not predrilled the tie down holes. Once hood is fit properly, mark and drill at 1/4".

Floatation Tire Application

If your truck has floatation tires, you may want to cut the wheel openings larger. To do so, fit hood and mark where the fender extension meets the hood. The hood will be roughly 1" longer than the fender extension. Cut the appropriate amount off the wheel openings.

If you have any questions, suggestions or comments please contact us at 1-800-451-1600.