

PLEASE READ

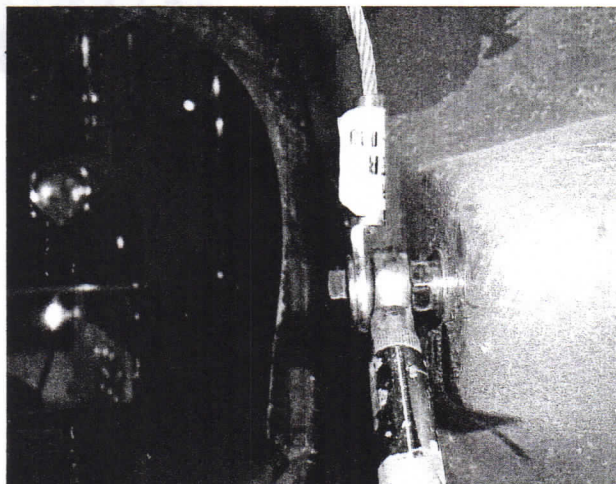
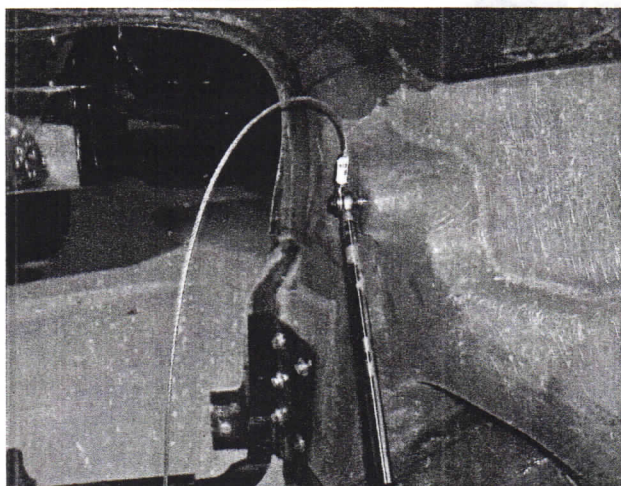
BEFORE MOUNTING!!

HOOD TO TRUCK

Thank you for purchasing a Jones Performance quality truck hood.

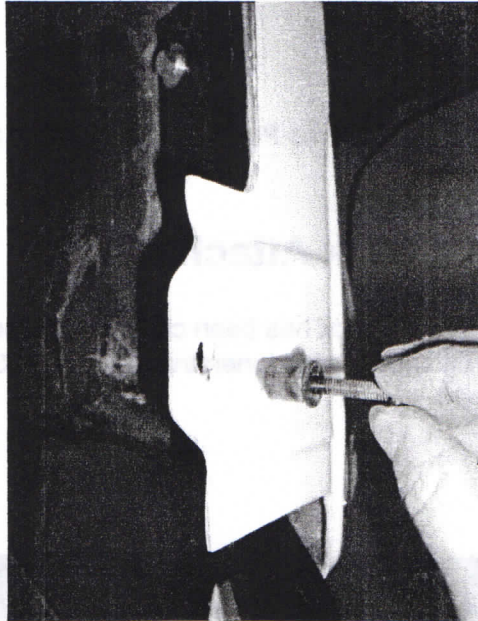
Tilt Shock Attachment

The mounting area for the tilt shock has been changed on your new JP hood. You will need to bolt your tilt shock to the innerstructure brace. See the pictures below for correct attachment.



Grill Mount

We have included two rubber well nuts. You will need to insert these into the hood before installing the grill. See the picture below for location.



If you have any questions, suggestions or comments please contact us at 1-800-451-1600.