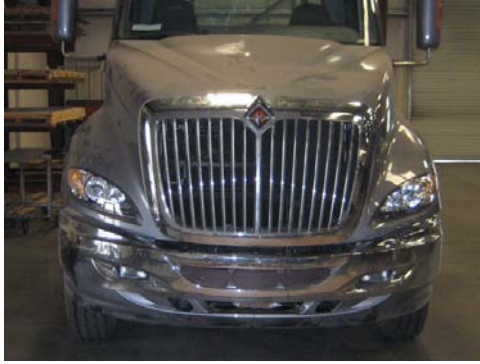


## International 2008 – Newer Pro-Star Mounting Instructions



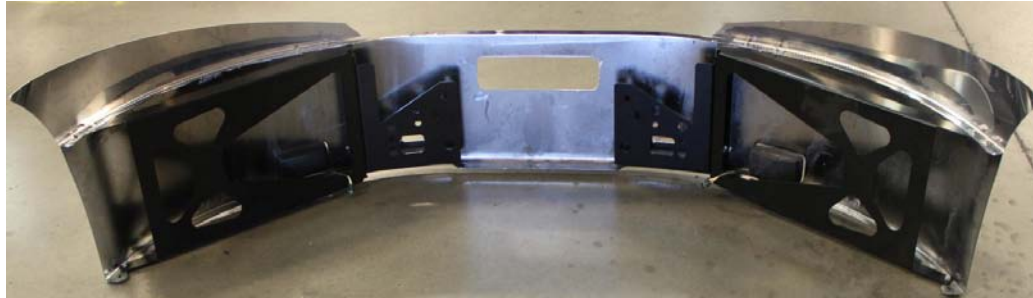
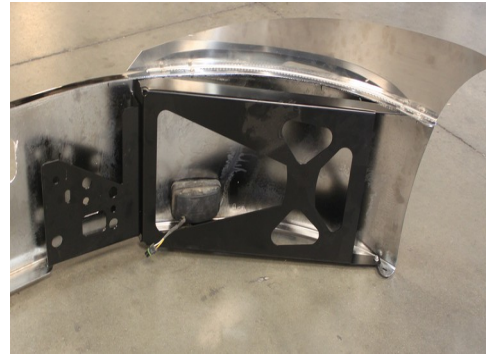
Step 1: Remove Factory Bumper



Tilt Down View



Step 2: Mount New Brkts to frame mount (Drvr & Psgr Sides)



**Step 3:** Bumper will have brackets mounted at factory (Extensions will be included in box). Interior brackets mount to truck frame/ Outer brackets mount to top and bottom flange of bumper and are attached to interior brackets (Mounted @ Factory). **Extensions** have been re-designed to follow the contour of the bumper and truck fender. Extensions are now flush with the face of the bumper (bolts for extensions are now blind mount and not seen from front of truck).

